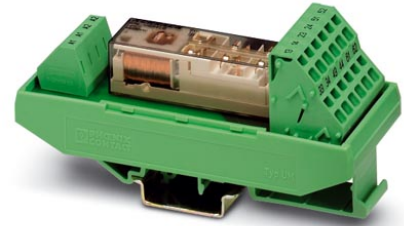


## PSR-SPF-120UC/URM/4X1/2X2

Order No.: 2981473

<http://eshop.phoenixcontact.de/phoenix/treeViewClick.do?UID=2981473>

Universal safety relay with positive-action contacts, spring-cage connection, 4 N/O contacts, 2 N/C contacts, width: 40 mm

### Commercial data

EAN	4017918987817
Pack	1 Pcs.
Customs tariff	85044090
Weight/Piece	0.126 KG
Catalog page information	Page 31 (IF-2007)

<http://www.download.phoenixcontact.com>  
Please note that the data given here has been taken from the online catalog. For comprehensive information and data, please refer to the user documentation. The General Terms and Conditions of Use apply to Internet downloads.

### Technical data

#### Input data

Nominal input voltage $U_N$	120 V AC/DC
Input voltage range in reference to $U_N$	0.8 ... 1.1
Typical input current at $U_N$	12 mA
Typical response time	10 ms
Typical release time	10 ms

#### Output data

Contact type	4 N/O, 2 N/C contacts
Contact material	AgSnO <sub>2</sub>
Maximum switching voltage	250 V AC/DC
Minimum switching voltage	15 V AC/DC
Limiting continuous current	6 A (total current on request)
Maximum inrush current	6 A

Inrush current, minimum	25 mA
Interrupting rating (ohmic load) max.	144 W (24 V DC, $\tau = 0$ ms)
	288 W (48 V DC, $\tau = 0$ ms)
	77 W (110 V DC, $\tau = 0$ ms)
	88 W (220 V DC, $\tau = 0$ ms)
	1500 VA (250 V AC, $\tau = 0$ ms)
Maximum interrupting rating (inductive load)	48 W (24 V DC, $\tau = 40$ ms)
	40 W (48 V DC, $\tau = 40$ ms)
	35 W (110 V DC, $\tau = 40$ ms)
	33 W (220 V DC, $\tau = 40$ ms)
Switching capacity min.	0.4 W
Output fuse	10 A gL/gK NEOZED (N/O contact)
	4 A gL/gK NEOZED (N/C contact)

#### General data

Length	111 mm
Width	40 mm
Height	56 mm
Ambient temperature (operation)	-20 °C ... 55 °C
Ambient temperature (storage/transport)	-20 °C ... 70 °C
Service life mechanical	Approx. $10^7$ cycles
Mounting position	Any
Name	Air and creepage distances between the power circuits
Standards/regulations	DIN EN 50178/VDE 0160
	EN 50205
Rated surge voltage / insulation	4 kV / basic insulation (safe isolation, increased isolation and 6 kV between input circuit and output contact current paths.)
Rated insulation voltage	250 V
Pollution degree	2
Surge voltage category	III

#### Connection data

Conductor cross section solid min.	0.2 mm <sup>2</sup>
Conductor cross section solid max.	2.5 mm <sup>2</sup>
Conductor cross section stranded min.	0.2 mm <sup>2</sup>
Conductor cross section stranded max.	2.5 mm <sup>2</sup>

Conductor cross section AWG/kcmil min.	24
Conductor cross section AWG/kcmil max	12
Stripping length	10 mm
Type of connection	Spring-cage conn.

**Certificates / Approvals**



Certification

CUL Listed, GOST, UL Listed

**Drawings**

Circuit diagram

